

Welcome to
SIKESTON



WHAT TO DO

| WHERE TO EAT

| PLACES TO SHOP

WE LOVE OUR LOCAL COMMUNITY AND WE KNOW YOU WILL TOO!

SIKESTON

CHAMBER / ECONOMIC DEVELOPMENT / TOURISM



TABLE OF CONTENTS

WELCOME

DEMOGRAPHICS

SIKESTON AT A GLANCE

MAJOR EMPLOYERS

ANNUAL EVENTS

HEALTHCARE

LOCAL CHURCHES

DINING

EDUCATION

CHILDCARE & HOUSING

THINGS TO DO

HISTORIC DOWNTOWN SIKESTON

LOCAL PARKS

BEYOND SIKESTON

WELCOME

On behalf of our community, we're thrilled to welcome you to Sikeston. Whether you're moving here for work, family, or just looking for a fresh start, Sikeston is a great place to live. With our mix of small-town charm and plenty of opportunities to grow and connect, we hope you'll feel at home in no time.

From our famous Sikeston Jaycee Bootheel Rodeo to a thriving local business scene, there's always something to experience and explore here. We've put together this guide to help you get to know the area—from schools and healthcare to dining, shopping, and entertainment. No matter what brings you to Sikeston, we know you will enjoy what we have to offer.

The Sikeston Post is here to help you settle in, answer questions, and connect you with our business community. We also hope to be a resource if you're looking for ways to get involved and meet people!

Welcome to Sikeston--we can't wait to see what you'll add to our growing, vibrant community.

*Sikeston Chamber. Economic
Development. and Tourism*



DEMOGRAPHICS

POPULATION



16,146

MEDIAN AGE



37.3

CLIMATE

Coldest Month: January

Avg. High: 42F Low: 24F

Hottest Month: July

Avg. High: 90F Low: 69F

Rain Annual Average: 47.5 inches

Snow Annual Average: 8.9 inches

COST OF LIVING

A typical home costs **\$132,300**, which is 60.9% less expensive than the national average of \$338,100 and 37.7% less expensive than the average Missouri home, at \$212,300. Renting a two-bedroom unit in Sikeston costs **\$850 per month**, which is 40.6% cheaper than the national average of \$1,430 and 11.8% cheaper than the state average of \$950.



Sikeston AT A GLANCE

WHERE ARE WE?

- 35 minutes to Cape Girardeau, MO (35 miles)
- 2 hours to Memphis, TN (140 miles)
- 2.5 hours to St. Louis, MO (146 miles)
- 3.5 hours to Nashville, TN (201 miles)
- 4 hours to Branson, MO (260 miles)



FUN FACTS ABOUT SIKESTON, MO:

- In 1789, the King of Spain ordered an overland route be established between New Orleans and St. Louis. This frontier road crossed through the area that would eventually become the City of Sikeston.
- Local residents and especially students supported America's war effort by raising money for the construction of three B-25 bombers (*Spirit of Sikeston, the Sikeston Bulldog and the City of Sikeston*). It is believed all three planes were used in the Doolittle Raid and are at the bottom of the Pacific somewhere between Japan and China.
- By 1912, Sikeston had approximately 50 businesses; several general stores, two flour mills, three churches, three banks, two newspapers and two schools. City-provided water, sewer and electrical service were established, and brick streets were installed. It is said that during this period Sikeston became home to more millionaires than any city of its size in the United States.
- The Sikeston Jaycees held their first "Bootheel Rodeo" in 1953.
- 20-year-old **Elvis Presley** and **Johnny Cash** performed at the Sikeston Armory in 1955.
- California Governor Ronald Reagan was the guest speaker at the 1965 Sikeston Chamber of Commerce Annual Banquet.
- In 1973 the Kenny Rogers Children's Center (formerly the Scott-Mississippi-New Madrid County United Cerebral Palsy Center) opened.
- **James Wilder**, a graduate of Sikeston Senior High School, was drafted by the Tampa Bay Buccaneers in 1981.
- During the 2004 Major League Baseball Draft former Sikeston High School baseball player **Blake DeWitt** was picked by the Los Angeles Dodgers. **Eric Hurley**, who was born in Sikeston, was also selected during the 2004 Draft to pitch for the Texas Rangers.
- Sikeston native **Neal Boyd**, a pop opera singer, was the 2008 winner of *America's Got Talent*. He was awarded the \$1-million prize and a headline show in Las Vegas, Nevada.

major EMPLOYERS



ALAN WIRE COMPANY
830 SOUTH WEST ST. , P.O. BOX 845
SIKESTON, MO 63801
573.471.9548

ELECTRICAL WIRE/CABLE
MANUFACTURING

DO IT BEST CORP.
2600 ROSE PARKWAY
SIKESTON, MO 63801
573.472.5772

RETAIL DISTRIBUTION

AMERICOLD
2500 ROSE PARKWAY
573.471.7727

COLD STORAGE &
DISTRIBUTION

**SAINT FRANCIS HEALTHCARE SYSTEM
FERGUSON MEDICAL GROUP**
1012 N. MAIN ST.
SIKESTON, MO 63801
573.471.0330

HEALTHCARE SERVICES

BOOTHEEL COUNSELING CENTER
760 PLANTATION BLVD.
SIKESTON, MO 63801
573.471.0800

HEALTHCARE SERVICES

FOOD GIANT, INC.
120 INDUSTRIAL DRIVE
SIKESTON, MO 63801
573.471.3500

RETAIL FOOD SALES

BURCH FOOD SERVICE
P.O. BOX 1667
SIKESTON, MO 63801
573.471.3003

VENDING/FRESH FOOD

LOWES HOME CENTER, INC.
1240 S. MAIN ST.
SIKESTON, MO 63801
573.472.7800

RETAIL

CITY OF SIKESTON
105 E. CENTER ST.
SIKESTON, MO 63801
573.471.2512

LOCAL GOVERNMENT

MISSOURI DELTA MEDICAL CENTER
1008 N. MAIN ST.
SIKESTON, MO 63801
573.471.1116,

HEALTH CARE SERVICES

CONSTRUCTION TRAILER SPECIALISTS
2535 ROSE PARKWAY
SIKESTON, MO 63801
573.481.0941

TRAILER MANUFACTURING

MISSOURI DEPARTMENT OF TRANSPORTATION
DISTRICT 10 HEADQUARTERS
2675 N. MAIN
SIKESTON, MO 63801
573.472.5333

REGIONAL HEADQUARTERS

DEWITT COMPANY
905 S. KINGSHIGHWAY
SIKESTON, MO 63801
573.472.0048

LANDSCAPING PRODUCTS

MONTGOMERY BANK
ONE FIRST NATIONAL PLAZA, P.O. BOX 948
SIKESTON, MO 63801
573.471.2275

FINANCIAL SERVICES

ORGILL, INC.
2727 N. MAIN
SIKESTON, MO 63801
573.471-2071z

RETAIL DISTRIBUTION

SIKESTON PUBLIC SCHOOLS
1002 VIRGINIA
SIKESTON, MO 63801
573.472.2581

PUBLIC EDUCATION

REFRESCO BEVERAGE
301 LARCEL DRIVE
SIKESTON, MO 63801
573.471.4445

PACKAGING PLANT

STEWART STEEL, INC.
P.O. BOX 551, 1219 E. HWY 62
SIKESTON, MO 63801
573.471.2121

DOORS/FRAME MANUFACTURING

SIKESTON BOARD OF MUNICIPAL UTILITIES
107 W. MALONE, P.O. BOX 370
SIKESTON, MO 63801
573.471.3328

MUNICIPAL UTILITIES

TETRA PAK, INC.
2200 EAST MALONE
SIKESTON, MO 63801
573.471.1441

LIQUID-TIGHT PACKAGING

UNILEVER
2400 ROSE PARKWAY
SIKESTON, MO 63801
573.471.7051
573.471.2598 FAX

ICE CREAM/POPCICLE
MANUFACTURING

WAL MART
1303 S. MAIN ST.
SIKESTON, MO 63801
573.472.3020

RETAIL SALES



OUR ANNUAL HOT AIR
BALLOON FESTIVAL

ANNUAL *events*

ST. PATRICK'S DAY FESTIVAL

The Downtown Sikeston St. Patrick's Day Festival features activities such as a homebrew competition, 1K Donut Run, cornhole tournaments, costume contests, craft vendors and great food.



SIKESTON JAYCEE BOOTHEEL RODEO

The Sikeston Jaycee Bootheel Rodeo is one of the top 40 rodeos in the entire nation. It is put on by the Jaycees to raise money for many organizations in and around Sikeston, MO. The rodeo consists of four nights in August, containing rodeo events, followed by live entertainment from popular artists and bands.



SIKESTON AMERICAN LEGION COTTON CARNIVAL

The American Legion Cotton Carnival is a five-day carnival featuring games, carnival rides, music, refreshments, pageants and a parade. The Cotton Carnival parade is one of the largest parades in Missouri. It is also one of the oldest festivals in the area, as they just recently celebrated their 80th carnival.



THE WINE FESTIVAL

The Historic Downtown Sikeston Wine Festival features samples from area wineries and hors d'oeuvres from Downtown businesses and sponsors. Listen to great music and enjoy fantastic local wines while Center Street is transformed into a beautiful scene perfect for a night out on the town.



RETURN TO SUNSET

Return to Sunset is a neighborhood reunion set for a weekend full of activities such as games, live music, food vendors, a parade, and praise and worship on to follow on Sunday. The Return to Sunset celebration is located at Lincoln Park.



HOT AIR BALLOON FESTIVAL

The Hot Air Balloon Festival includes Balloon Glow, tethered hot air balloon rides, multiple food and beverage vendors, live music, and plenty of activities for people of all ages. The Hot Air Balloon Festival is typically a three-day event.





SEMO HEALTH NETWORK

SEMO Health Network exists to provide caring & affordable health care, while making our patients feel welcome in our warm and friendly atmosphere. Services provided include medical, dental, and lab services. Sikeston Medical Center aims to provide care for all patients in medically underserved and rural communities, with or without insurance. Special programs have been put in place to ensure ALL are welcome and well taken care of. Programs such as 340 B and Translation services are offered to give you a variety of payment plan options.



Ferguson Medical Group is the only multi-specialty group between Memphis and St. Louis offering complete laboratory and radiology facilities, pulmonary function laboratory, bone density scanning, and independent pharmacy within the building for the convenience of patients. Ferguson Medical Group is a premium healthcare facility which combines and utilizes the knowledge, experience and talents of the best professionals with the latest technology to provide state-of-the-art, quality medical care.

HEALTHCARE



MISSOURI DELTA
FOCUSED ON THE FUTURE OF HEALTHCARE

The Missouri Delta Medical Center, founded in 1948, has more than 185 beds and over 84 physicians on medical staff specializing in 25 different areas of healthcare. In a 2014 survey Missouri Delta Medical Center was ranked #1 in the State for overall patient experience. Missouri Delta Medical Center includes several walk-in clinics around Southeast Missouri, all of which are equipped to handle an array of illnesses and injuries. Around the clock urgent care is always available at the main campus emergency room. They also have Express Care for less urgent, though immediate health concerns.

LOCAL CHURCHES

BETHEL MISSIONARY BAPTIST

CAPE FIRST OF SIKESTON

CHURCH OF CHRIST

CHURCH OF CHRIST:
SHADY ACRES

CHURCH ON THE ROCK

COMMUNITY CHURCH OF
NAZARENE

COMPASSION CHURCH

CONCORDIA LUTHERAN

DISCOVER LIFE CHURCH

FIRST BAPTIST CHURCH

FIRST CHRISTIAN CHURCH

FIRST UNITED METHODIST
CHURCH

GLORY OF GOD CHURCH
OF GOD IN CHRIST

GREEN MEMORIAL CHURCH
OF GOD IN CHRIST

GREERS CHAPEL
MISSIONARY BAPTIST CHURCH

HEARTLAND HARVEST CHURCH
OF GOD OF PROPHECY

HOUSEHOLD OF FAITH

HUNTER MEMORIAL FIRST
PRESBYTERIAN

ILLINOIS AVE. GENERAL
BAPTIST CHURCH

IOG THE ISRAEL OF GOD

JUBILEE HOUSE OF PRAYER
OUTREACH MINISTRY

LIFE CHURCH

LIVING WATERS

MT. CALVARY MISSIONARY
BAPTIST

MURRAY LANE BAPTIST

NEW DELIVERANCE PRAISE
AND WORSHIP CENTER

NEW DIRECTION OUTREACH
MINISTRIES

ONE CHURCH

ORTHODOX ANGLICAN

SIKESTON FIRST
ASSEMBLY OF GOD

SMITH AVE. CHURCH OF
GOD

SMITH CHAPEL UNITED
METHODIST

ST. FRANCIS XAVIER
CATHOLIC CHURCH

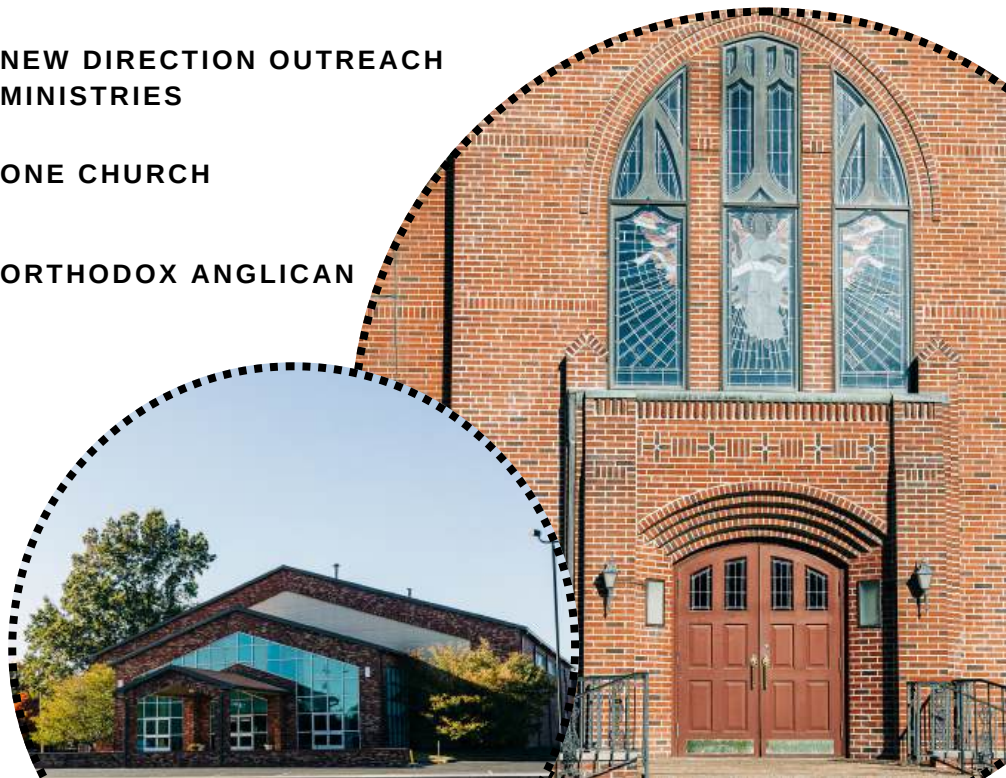
ST. PAULOS EPISCOPAL

TANNER ST. CHURCH
OF GOD

THE COUNTRY

THE SANCTUARY UNITED
PENTECOSTAL CHURCH

WEST END MISSIONARY
BAPTIST





SIKESTON JAYCEE
BOOTHEEL RODEO



UNIQUE DINING



SUSIE'S BAKE SHOPPE AND RESTAURANT

Susie's offers a wide variety of food, such as chicken and dumplings, sandwiches, Soups of the Day, Salads, or even a tasty bite from their delicious bakery. Susie's is located in Downtown Sikeston at 112 E. Center St.



KIRBY'S SANDWICH SHOP

Kirby's has been serving burgers in Sikeston, MO since 1907. Kirby's specialty is the Kirby Burger...a double cheese burger cooked with sliced onions. It's a must have if you're in the area. Generations have grown up on Kirby's, located at 109 N. Kingshighway St.



LAMBERT'S CAFE

Lambert's Cafe is the "Home of the Throwned Rolls". Yep- You read that right. At Lambert's you'll get free pass'arounds with every meal, as well as delicious rolls that are tossed right to you! Lambert's offers delicious meals with a home-cooked feel, located at 2305 E. Malone Ave.



JAY'S KRISPY FRIED CHICKEN

Jay's Krispy Fried Chicken offers some of the tastiest fried chicken around. Jay's offers a variety of chicken, sides, and even serve breakfast too, starting at 6:00 AM. There's nothing like a Jay's chicken sandwich, especially with their special sauce! Jay's is located at 218 N Main St.



CARSON'S BY CHEF ADAM GLENN

Carson's by Chef Adam Glenn is a fine dining establishment in Sikeston, MO. The menu consists of small plates, salads, charcuterie, dinner plates, and specialty cocktails. The menu is rotated often, which allows for more opportunity to try new things! Carson's is located at 104 E. Front St.



THE 110 BAR & GRILL

The 110 Bar & Grill features a restaurant and bar containing delicious burgers, wings, appetizers, & more! The building houses a non-smoking "lunch only" dining area, as well the main bar area in the back. The 110 Bar & Grill is located at 110 Robert St.

EDUCATION

SIKESTON PUBLIC SCHOOLS



SIKESTON KINDERGARTEN AND EARLY CHILDHOOD CENTER

1310 E Salcedo Road
Phone: 573-471-0653
Fax: 573-471-0654

LEE HUNTER ELEMENTARY SCHOOL

315 Baker Lane
Phone: 573-472-2200
Fax: 573-472-3847

SOUTHEAST ELEMENTARY SCHOOL

2300 Ables Road
Phone: 573-472-0707
Fax: 573-472-1714

WING ELEMENTARY SCHOOL

1123 General George E Day Parkway
Phone: 573-471-0615
Fax: 573-471-0614

SIKESTON MIDDLE SCHOOL

100 Twitty Drive
Phone: 573-471-0792
Fax: 573-471-0793

SIKESTON JUNIOR HIGH SCHOOL

510 Lindenwood Ave
Phone: 573-471-1720
Fax: 573-472-8884

SIKESTON SENIOR HIGH SCHOOL

200 Pine Street
Phone: 573-472-8850
Fax: 573-472-8857

SIKESTON ALTERNATIVE EDUCATION CENTER

835 W. Murray Lane
Phone: 573-472-8808
Fax: 573-472-1444

SIKESTON CAREER AND TECHNOLOGY CENTER

200 Pine Street
Phone: 573-471-5442
Fax: 573-472-8861

PRIVATE SCHOOLS

ST. FRANCIS XAVIER

106 N. Stoddard St.
Phone: 573-471-0841
Fax: 573-475-9847



THE CHRISTIAN ACADEMY

103 E. Kathleen St.
Phone: 573-481-0216



HIGHER EDUCATION

Here in Sikeston, we are fortunate enough to have two regional campuses in our town. We believe that it is important for our younger generations to have the option to get a college degree while staying close to home.

THREE RIVERS COLLEGE

Visit trcc.edu to learn more about Three Rivers College - Sikeston.
Located at 1400 S. Main St. - 573-472-5223



SOUTHEAST MISSOURI STATE UNIVERSITY

Visit semo.edu/about/campuses/sikeston to learn more about SEMO - Sikeston.
Located at 2401 N. Main St. - 573-472-3210



CHILDCARE

MRS. JUDY'S DAYCARE

Christi Johnson
573-481-0214 / Facebook Messenger
1810 Garwood Ave.

KINGS & QUEENS DAYCARE LLC

Lillie Beasley
573-233-0019
233 Edmondson St.

GIGGLES-N-SCRIBBLES DAYCARE

573-931-1937
916 Stanford Dr.

AZIYAH'S LITTLE ANGEL'S DAYCARE

573-639-8463
105 E. Kathleen St.

LIL' BULLDOGS CHILD CARE CENTER

573-931-9271
307 N. Prairie St.

CORNERSTONE DAYCARE LLC

573-703-3697
Please call the number provided for more
information.

KIM ALLEY DAYCARE

573-620-7081
214 Blake Ln.

SEMO CHRISTIAN ACADEMY

573-472-0883
1440 Ables Rd.



LOCAL LANDLORDS

SMG REALTY

573-472-4800

www.smgmo.com

BIZZELL PROPERTIES

Dwight Bizzell

573-380-9208

STEWART RENTALS

573-471-9292

573 Greer Ave.

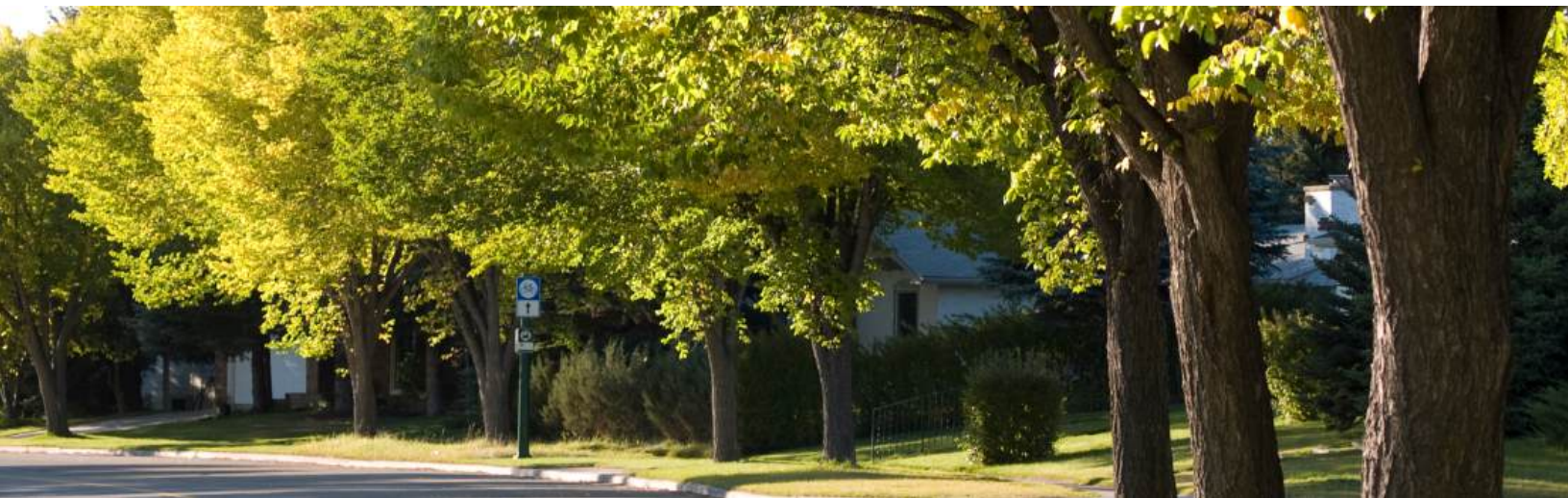
COLLOM RENTALS, LLC

1817 E. Malone Ave

573-472-2411 | 573-380-0948



For a full list of Property Owners/Landlords, contact the City of Sikeston at [573-471-2512](tel:573-471-2512) or visit their website at sikeston.org.



THINGS TO DO IN



YOUTH PROGRAMS AND RECREATION

The City of Sikeston compiled a list of recreational activities available in the Sikeston area with contact information for each, such as youth football and soccer. The list is ever-growing so please check our City website for any information.



THE SIKESTON DEPOT MUSEUM

The Sikeston Depot Museum & Gallery, a restored train depot on the National Register of Historic Places, is filled with local history and memorabilia. It hosts local, as well as traveling art and cultural exhibits from the Smithsonian and other institutions.



THE CITY LIBRARY

Sikeston's City Library houses more than 32,000 books, audio-books, videos and magazines. The programs include book discussion groups, weekly pre-school story hour and "Family Night" events and an outstanding summer reading program for pre-school through high school youth.



THE SIKESTON LITTLE THEATRE

The Albritton-Mayer Cultural Center is home to the Sikeston Little Theatre Group which provides musical, drama and comedy performances throughout the year.

Sikeston



APPLE RIDGE ORCHARD

Apple Ridge Orchard is a family friendly Century farm. You pick or buy fresh produce. Featured crops include lavender, strawberries, blackberries, blueberries, apples, sunflowers and more. The Country Store located on site features homemade donuts, gourmet popcorn and slushies. Free wagon rides.



SIKESTON RODEO MUSEUM

The Sikeston Rodeo Museum is new to the area. It features memorabilia and interesting facts about the Sikeston Jaycee Bootheel Rodeo. Some memorabilia featured in the museum include contracts from entertainers, live footage from past decades, and more.



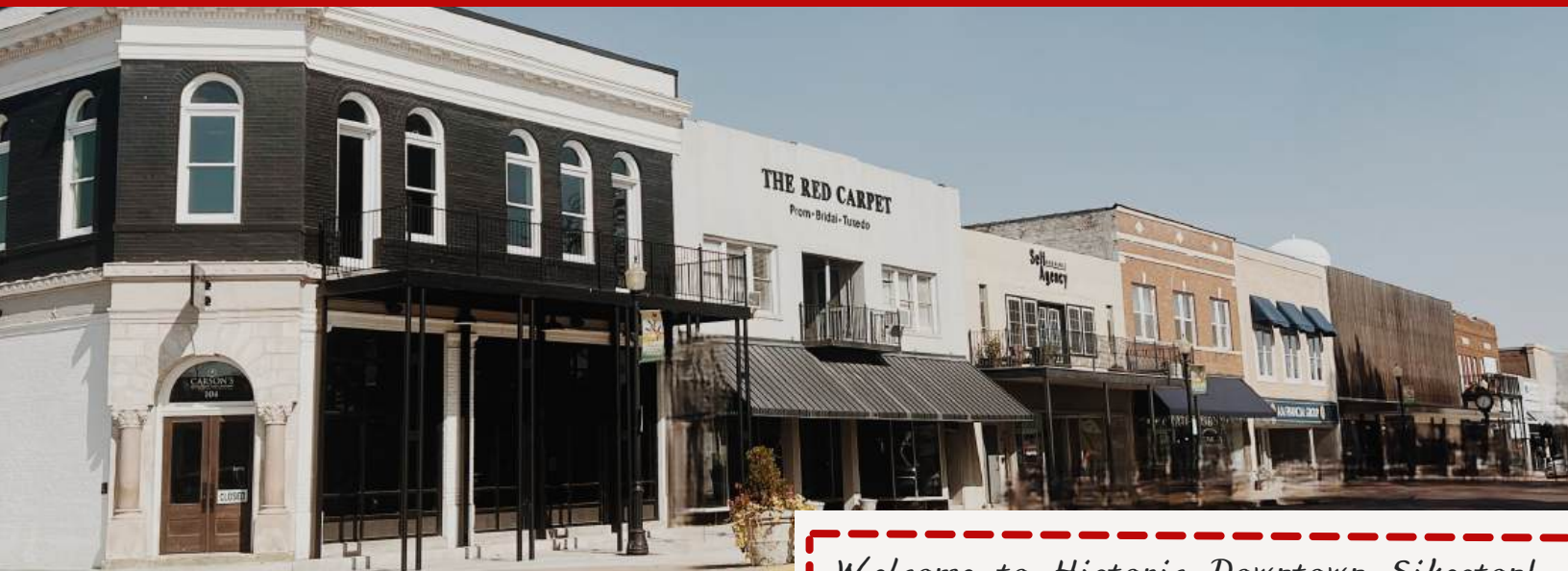
MALONE PARK CENTER FOR THE ARTS

Malone Park Center for the Arts offers various art and music opportunities for all ages. They provide classes, workshops, tutoring, practice hours, exhibitions, and more.



VARIOUS HOLIDAY FESTIVALS AND PARADES

Throughout the year, Sikeston has many festivals and parades for various events, especially for the holidays. Some events include the Christmas Parade, Stampede Week, Crawfish Boil (pictured), and more.



HISTORIC DOWNTOWN *Sikeston*

PLACES TO EAT

CARSON'S BY CHEF ADAM GLENN

104 E. Front St.

SUSIE'S BAKE SHOPPE

112 E. Center St.

XTREME NUTRITION

204 W. North St.

GROUND-A-BOUT COFFEE

114 E. Front St.

KIRBY'S SANDWICH SHOP

109 N. Kingshighway St.

T & L BAR AND GRILL

109 W. Malone Ave.

*Welcome to Historic Downtown Sikeston!
We're so excited to have you here, and we hope you'll feel right at home from the moment you arrive.*

In Sikeston, we believe that our downtown is the heart of our community, where you can explore charming historic buildings and stunning brick streets while checking out local shops, grabbing a bite to eat, or just enjoying the small-town atmosphere. From seasonal festivals and parades to welcoming storefronts and vibrant summer weekends with Farmer's Market and the Summer Concert Series, there is something for everyone here.

Whether you're visiting for the first time or have called this place home for years, our downtown will make you feel connected and right at home. We can't wait for you to explore all that we have to offer!

PLACES TO SHOP

MELISSA KAY & CO.
116 CENTER ST.

KING'S JEWELRY AND REPAIR
120 N. KINGSHIGHWAY ST.

J&E WHOLESALE
311 E. MALONE AVE

**THE PINK DOOR BOUTIQUE
AND SALON**
511 TANNER ST.

**THE LOFT SALON AND
BOUTIQUE**
514 TANNER ST.

PURSE N' ALITY BOUTIQUE
410 TANNER ST.

**REFLECTIONS SALON AND
BOUTIQUE**
120 E. CENTER ST.

PERSONAL EXPRESSIONS
127 W. CENTER ST.

1998 BOUTIQUE
118 E. CENTER ST.

THE PAWN
138 E. FRONT ST.

BO'S JEWELRY AND PAWN
136 E. FRONT ST.

**SAM'S FINE JEWELRY & THE
ENGRAVING SHOP**
130 E. FRONT ST.

KING'S WIGS AND BEAUTY
138 E. MALONE AVE.

RHINESTONE ROOSTER
124 E. FRONT ST.

**THE RED CARPET FORMAL
WEAR**
106 E. FRONT ST.

HERE WE GO AGAIN
120 W. FRONT ST.

STOGIES OF SIKESTON
130 W. FRONT ST.

MARGARET & JAMES
122 E. CENTER ST.

DEWITT EMBROIDERY
123 N. NEW MADRID ST.

OTHER DOWNTOWN BUSINESSES

RUFF CUTS
134 E. FRONT ST.

TOWER LOAN
132 E. FRONT ST.

BLADE'S SALON
133 E. FRONT ST.

**GIBSON RECOVERY
CENTER**
137 E. FRONT ST.

A.M. FINANCIAL GROUP
118 E. FRONT ST.

SELF INSURANCE AGENCY
110 E. FRONT ST.

**GRANT FINANCIAL
MANAGEMENT**
124 E. CENTER ST.

**DELTA AREA ECONOMIC
OPPORTUNITY CORP.**
104 W. CENTER ST.

**CITY OF SIKESTON (CITY
HALL)**
105 E. CENTER ST.

QUICK CHEK 2
206 E. CENTER ST.

**AMELIA'S BEAUTIQUE
SALON**
209 E. CENTER ST.

BOOTHEEL CROSSFIT
207 N. NEW MADRID ST.

SIKESTON REAL ESTATE
143 E. CENTER ST.

CENTER STREET STATION
104 E CENTER ST.

SIKESTON PUBLIC LIBRARY
121 E. NORTH ST.

SIKESTON U.S. POST OFFICE
120 E. NORTH ST.

**WORKING CLASS TATTOOS &
PIERCINGS**
112 N. KINGSHIGHWAY ST.

ELITE SPORT TAEKWONDO
214 E. MALONE AVE.

TANIC TAN
334 S. KINGSHIGHWAY ST.

**SIKESTON DEPOT MUSEUM &
GALLERY**
116 W. MALONE AVE

THE SIKESTON POST
215 N. NEW MADRID ST.

**HISTORIC DOWNTOWN
SIKESTON**
215 N. NEW MADRID ST.

**LAMBERT ENGINEERING &
SURVEYING**
125 N. NEW MADRID ST.

**ANTONIO'S SALON AND
MASSAGE**
127 N. NEW MADRID ST.



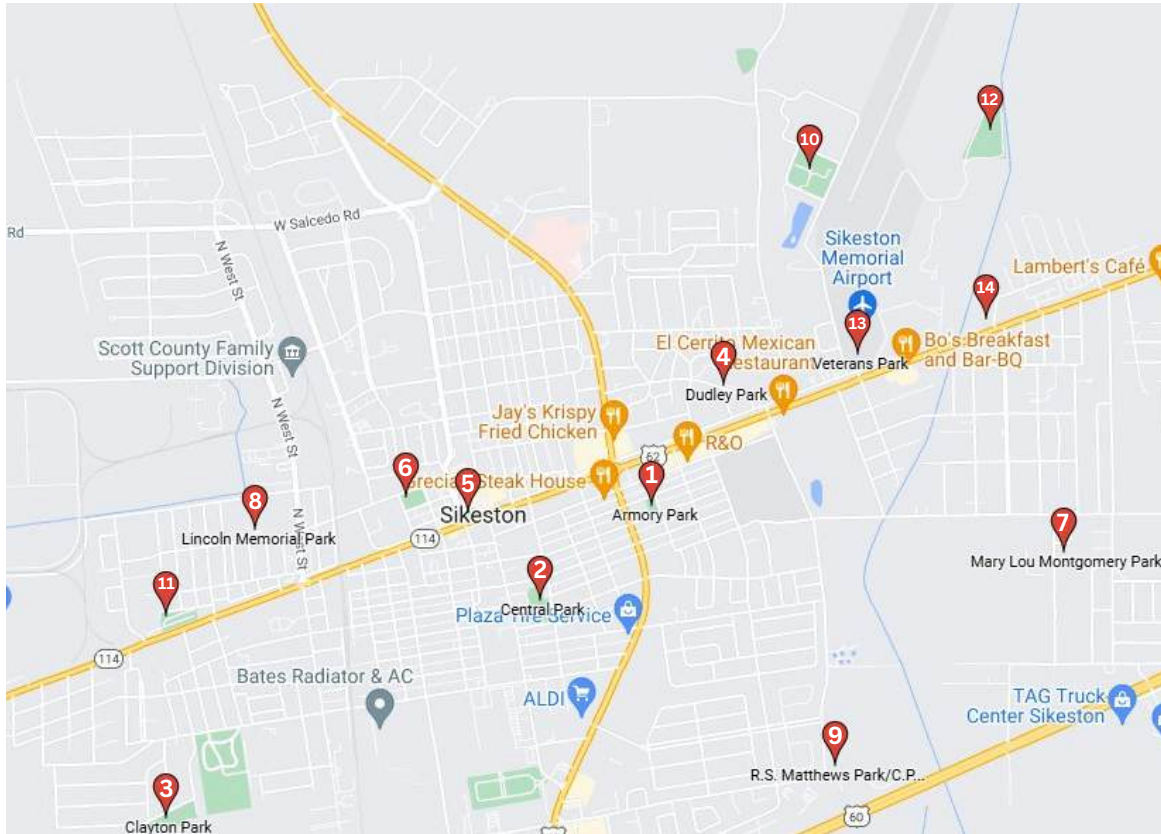
PARKS



The City of Sikeston has a total of 16 parks, 8 trails, including the [Cottonbelt Trail](#), and the [Clinton Building](#) in our park system, which is supervised by a Parks and Recreation Director and an advisory Park Board. Maintenance is provided by a 4-person Park Division under the direct supervision of a Parks Maintenance Supervisor. Recreation programming is organized and facilitated by a Recreation Coordinator.



PARK locations



1. Armory Park
2. Central Park
3. Clayton Park
4. Dudley Park
5. Legion Park
6. Malone Park
7. Mary Lou Montgomery Park
8. Lincoln Memorial Park
9. R.S. Matthews Park/C.P. Wing Lake
10. Recreation Complex/Clinton Building
11. Roberta Rowe/West End Park
12. Rotary Park
13. Veterans Park
14. VFW Memorial Stadium
15. North End Park (Not Pictured)
16. Norton Park (Not Pictured)



(R.S. Matthews Park/C.P. Wing Lake)

Beyond



RIVER RIDGE WINERY
SCOTT CITY, MO (27 MILES)



THE STARS AND STRIPES NATIONAL
MUSEUM & LIBRARY
BLOOMFIELD, MO (25 MILES)



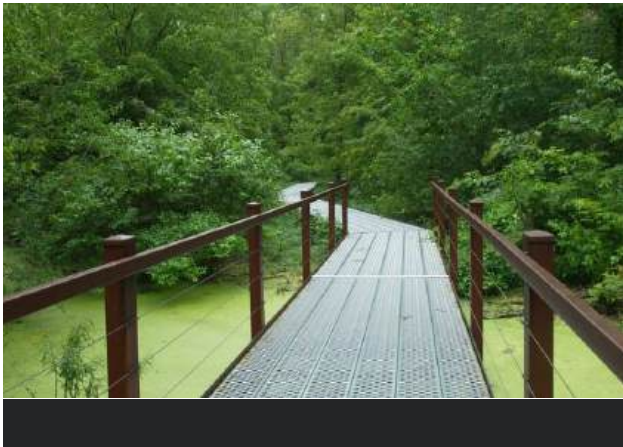
HUNTER-DAWSON STATE
HISTORIC SITE
NEW MADRID, MO (21 MILES)



CENTURY CASINO & HOTEL
CAPE GIRARDEAU, MO (35 MILES)

CHECK OUT OUR WEBSITE AT SIKESTON.NET/TOURISM TO FIND OUR VISITOR'S GUIDE AND OTHER HELPFUL RESOURCES.

SIKESTON



BIG OAK TREE STATE PARK
EAST PRAIRIE, MO (35 MILES)



BOLLINGER MILL STATE
HISTORIC SITE
BURFORDVILLE, MO (44 MILES)



NEW MADRID HISTORICAL MUSEUM
NEW MADRID, MO (21 MILES)



CAPE SAFARI PARK
CAPE GIRARDEAU, MO (40 MILES)

CHECK OUT OUR WEBSITE AT SIKESTON.NET/TOURISM TO FIND OUR VISITOR'S GUIDE AND OTHER HELPFUL RESOURCES.

*We'll
Come Back!*

SIKESTON

CHAMBER / ECONOMIC DEVELOPMENT / TOURISM